

Clarke®



LED WORKLIGHT(110V)

MODEL NO: SMDT2700/1

PART NO: 4003646

ASSEMBLY & USER INSTRUCTIONS

UK
CA | CE



ORIGINAL INSTRUCTIONS

GC-02/25

INTRODUCTION

Thank you for purchasing this CLARKE portable LED worklight which can be used either indoors or outdoors. Before attempting to use this product, please read this manual thoroughly and follow the instructions carefully. In doing so you will ensure the safety of yourself and that of others around you, and you can look forward to your purchase giving you long and satisfactory service.

TECHNICAL INFORMATION

Model	SMDT2700/1
Dimensions (L x W x H)	780 x 780 x 950 mm (min) 780 x 780 x 1770 mm (max)
Weight	2.85 kg
Tilt adjustment	180 degrees
Light Source	SMD LED array
Operating Temperature	-10 to + 45oC
Input power	30 W
Light Output (luminous flux)	2700 @ 1m (lumens)
Power Supply	110V
Insulation Class	Class 1
IP Rating	IP65
Energy Efficiency Class	F
Efficiency	90 Lm/W
Colour Temperature	6500 K
Weighted Energy Consumption	30 kWh/1000 h
Life expectancy of LED	30,000 hours

SAFETY PRECAUTIONS

1. This worklight must not be immersed in water.
2. **DO NOT** look directly into the lamp when switched on as this can damage the eyes.
3. If used with an extension cable always ensure that the extension cable is fully unwound.
4. **DO NOT** use this worklight if it has a broken lens, casing or damaged cable.
5. **ALWAYS** unplug the worklight before moving it or performing maintenance. Do not touch the lamp when your hands are wet.
6. **DO NOT** attempt to disassemble or repair the worklight.
7. **DO NOT** leave the worklight unattended when switched on. Always unplug the worklight when it is not in use.
8. **NEVER** unplug by holding the cable. Unplug by holding the plug.
9. **NEVER** use the worklight if the cable or plug are damaged.
10. When assembling the tripod, ensure that the ground is level and firm.
11. Take extra care not to push or knock the tripod over when fully extended.
12. Ensure the lamp is a safe distance from other objects in the working space.

GUARANTEE

This product is guaranteed against faulty manufacture for a period of 12 months from the date of purchase. Please keep your receipt which will be required as proof of purchase.

This guarantee is invalid if the product is found to have been abused or tampered with in any way, or not used for the purpose for which it was intended.

Faulty goods should be returned to their place of purchase, no product can be returned to us without prior permission. This guarantee does not effect your statutory rights.

ENVIRONMENTAL RECYCLING POLICY

Through purchase of this product, the customer is taking on the obligation to deal with WEEE in accordance with the WEEE regulations in relation to the treatment, recycling, recovery & environmentally sound disposal of the WEEE.

This means that this product must not be disposed of with general household waste. It must be disposed of according to the laws governing Waste Electrical and Electronic Equipment (WEEE) at a recognised disposal facility.

ELECTRICAL CONNECTIONS



WARNING! READ THESE ELECTRICAL SAFETY INSTRUCTIONS THOROUGHLY BEFORE CONNECTING THE PRODUCT TO A POWER SUPPLY.

This product can be connected to one of the following power supplies:

- 110V generator
- 110V isolating transformer
- 110V site supply
- 230V generator via a 110V transformer.

Connecting it to any other power source may cause damage.

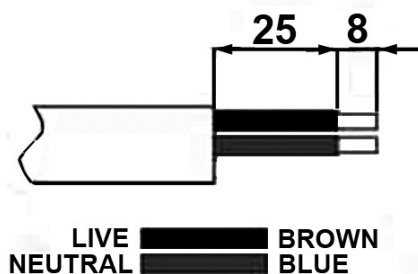
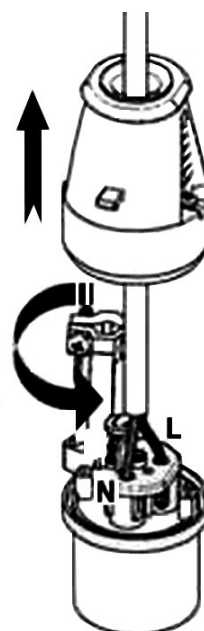
This product includes a fitted industrial plug to BS-EN 60309 and cable for use with a 110 volt supply. On no account may a 230V/13amp (BS1363) plug be used.

If using a portable 110V transformer make sure it has a rated capacity sufficient to take the load of the worklight.

Should the plug need changing at any time, ensure that a plug of identical specification is used and proceed as follows:

1. Undo the socket screws & remove the rear section.
2. Rotate the cable clamp clear of the terminals.
3. Feed the cable through the rear gland in the plug.
4. Remove the cable sheath to the required lengths as shown in the diagram.
5. Terminate the correct wires in the correct terminal blocks as shown.
6. Remove the cable clamp screws. Clip the cable clamp back into position and place the clamp around the outer sheath of the cable. Replace the screws and tighten until the cable is securely held.
7. Replace the rear cover and tighten the cover screws.

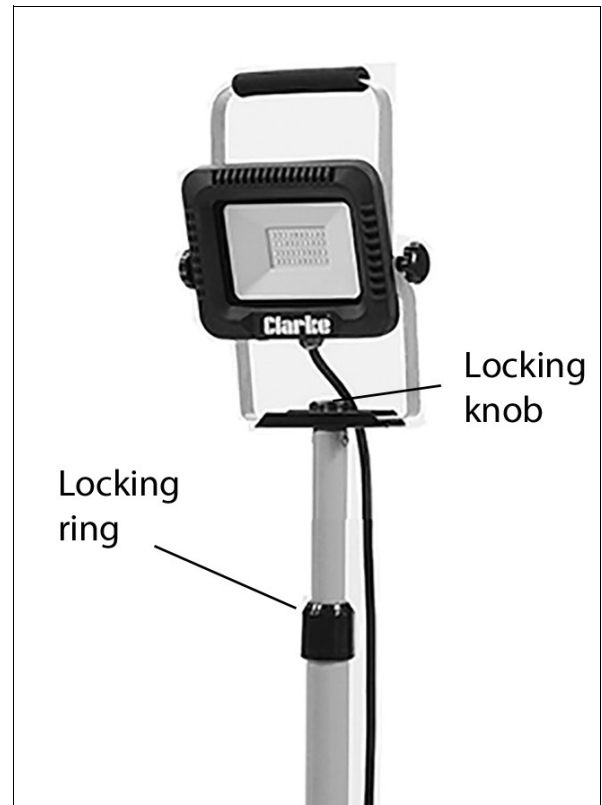
If in any doubt, consult a qualified electrician. DO NOT attempt any repairs yourself.



ASSEMBLY & MOUNTING

The tripod stand is supplied fully assembled.

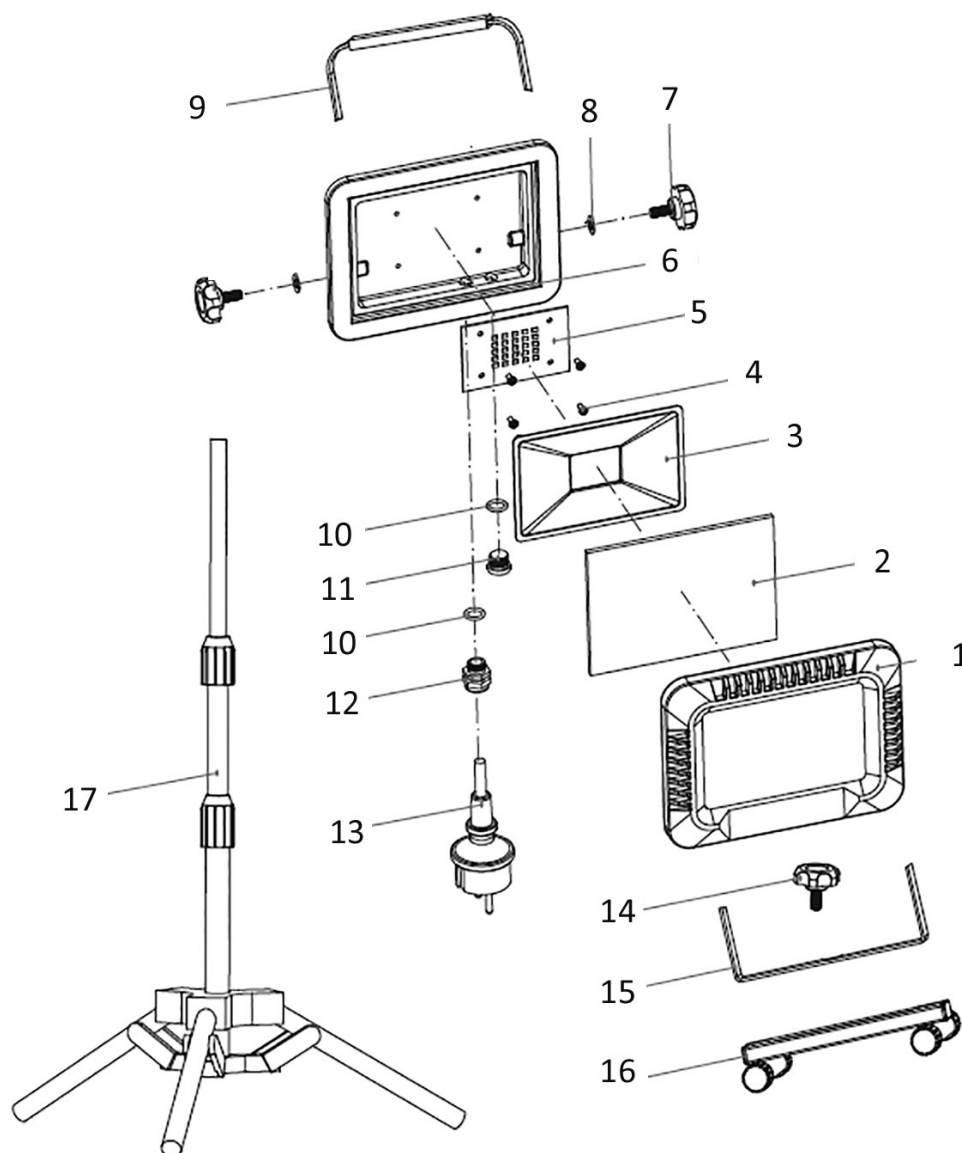
1. Pull the legs apart to erect the tripod and set in position.
2. Adjust the height of the tripod column by twisting the locking rings anti-clockwise to release and sliding the tubes to the required height before twisting clockwise to lock.
3. Attach the worklamp to the column by securing with the locking knob.
 - The worklamp can be swivelled if required by loosening the knob.
4. Tighten the knobs on either side of the lamp to set the angle of elevation as required.



CARE & STORAGE

1. When not in use, switch off & unplug from the power supply. Coil the cable around the storage hooks provided on the tripod for tidy storage.
2. Store this product in a secure, dry place, out of the reach of children. **DO NOT** leave it exposed to the elements and avoid direct sunlight, direct heat, rain/moisture etc.
3. Keep the external surfaces clean. Avoid impact damage & **DO NOT** allow this product to come into contact with abrasive or corrosive materials.
4. **DO NOT** use solvents, thinners or alcohol for cleaning, as these chemicals will damage the finish. With the lamp unplugged from the power supply, use a dry cloth to wipe over the lamp components.
5. The LED light source cannot be replaced but has a life expectancy of approximately 30000 hours.
6. **DO NOT** attempt to repair or modify this product or attempt any electrical repair yourself. Consult the Clarke Service Department.

COMPONENT PARTS



1	Face frame
2	4mm glass
3	Reflector
4	Screw M3 x 6
5	LED panel
6	Housing
7	Angle adjusting knob
8	Washer M6
9	Handle

10	O-ring
11	End cap
12	Cable gland
13	Cable with plug
14	Locking knob M6
15	Lower bracket
16	H-stand
17	Tripod stand

DECLARATIONS OF CONFORMITY



Hemnell Street, Epping, Essex, CM16 4LG

DECLARATION OF CONFORMITY

This is an important document and should be retained.

We hereby declare that this product(s) complies with the following legislation:

2014/30/EU Electromagnetic Compatibility Directive
2014/35/EU Low Voltage Directive
2011/65/EU Restriction of Hazardous Substances (RoHS) Directive

The following standards have been applied to the product(s):

EN 61000-3-3:2013+A1:2019+A2:2021, EN IEC 61000-3-2:2019+A1:2021, EN 62493:2015+A1:2022,
EN IEC 55015:2019+A11:2020, IEC 62321-4:2013+A1:2017, IEC 62321-2:2021, IEC 62321-5:2013,
EN IEC 60598-1:2021+A11:2022, IEC 62321-3-1:2013, IEC 62321-7-1:2015, IEC 62321-7-2:2017,
EN IEC 62031:2020+A11:2021, EN IEC 61547:2023, EN 60598-2-4:2018, IEC 62321-6:2015,
IEC 62321-8:2017, EN 62321-3-1:2014, EN 62321-1:2013, EN 62321-5:2014,
EN 62321-4:2014/A1:2017

The technical documentation required to demonstrate that the product(s) meet(s) the requirement(s) of the aforementioned legislation has been compiled and is available for inspection by the relevant enforcement authorities.

The UKCA mark was first applied in: 2025

Product Description: LED Light
Model Number(s): SMDT2700/1
Serial/Batch Number: Refer to product/packaging label
Date of Issue: 13/02/2025

Signed:

J.A. Clarke

Director

SMDT2700-1 UKCA Clarke DOC 021325

Page 1 of 1



Fitzwilliam Hall, Fitzwilliam Place, Dublin 2

DECLARATION OF CONFORMITY

This is an important document and should be retained.

We hereby declare that this product(s) complies with the following legislation:

2014/30/EU Electromagnetic Compatibility Directive
2014/35/EU Low Voltage Directive
2011/65/EU Restriction of Hazardous Substances (RoHS) Directive

The following standards have been applied to the product(s):

EN 61000-3-3:2013+A1:2019+A2:2021, EN IEC 61000-3-2:2019+A1:2021, EN 62493:2015+A1:2022,
EN IEC 55015:2019+A11:2020, IEC 62321-4:2013+A1:2017, IEC 62321-2:2021, IEC 62321-5:2013,
EN IEC 60598-1:2021+A11:2022, IEC 62321-3-1:2013, IEC 62321-7-1:2015, IEC 62321-7-2:2017,
EN IEC 62031:2020+A11:2021, EN IEC 61547:2023, EN 60598-2-4:2018, IEC 62321-6:2015,
IEC 62321-8:2017, EN 62321-3-1:2014, EN 62321-1:2013, EN 62321-5:2014,
EN 62321-4:2014/A1:2017

The technical documentation required to demonstrate that the product(s) meet(s) the requirement(s) of the aforementioned legislation has been compiled and is available for inspection by the relevant enforcement authorities.

The CE mark was first applied in: 2025

Product Description: LED Light
Model Number(s): SMDT2700/1
Serial/Batch Number: Refer to product/packaging label
Date of Issue: 13/02/2025

Signed:

J.A. Clarke

Director

SMDT2700-1 CE Clarke DOC 021325

Page 1 of 1

A SELECTION FROM THE VAST RANGE OF

Clarke®

QUALITY PRODUCTS



AIR COMPRESSORS
From DIY to industrial, Plus air tools, spray guns and accessories.

GENERATORS
Prime duty or emergency standby for business, home and leisure.

POWER WASHERS
Hot and cold, electric and engine driven - we have what you need

WELDERS
Mig, Arc, Tig and Spot.
From DIY to auto/industrial.

METALWORKING
Drills, grinders and saws for DIY and professional use.

WOODWORKING
Saws, sanders, lathes, mortisers and dust extraction.

HYDRAULICS
Cranes, body repair kits, transmission jacks for all types of workshop use.

WATER PUMPS
Submersible, electric and engine driven for DIY, agriculture and industry.

POWER TOOLS
Angle grinders, cordless drill sets, saws and sanders.

STARTERS/CHARGERS
All sizes for car and commercial use.



PARTS & SERVICE:

0208 988 7400

Parts Enquiries
Parts@clarkeinternational.com

Servicing & Technical Enquiries
Service@clarkeinternational.com

SALES: UK 01992 565333 or Export 00 44 (0)1992 565335

Clarke® INTERNATIONAL Hemnall Street, Epping, Essex CM16 4LG
www.clarkeinternational.com